



OWNERS MANUAL MODELS X4 & X4D

Fishing without a Fish Hawk is called BOATING.

FISH HAWK BEYOND WARRANTY & DISCOUNT COVERAGE

We stand behind every system with the best warranty and service in the marine electronics industry.

TWO-YEAR WARRANTY

Fish Hawk Systems are fully guaranteed against any defect in parts or workmanship for two years from the date of purchase for the original owner.

DISCOUNT COVERAGE BEYOND TWO YEARS

In the event a product cannot be repaired for a fee in years three, four, or five; a new replacement product can be purchased at a 25% discount by the original owner.

CONDITIONS

This warranty does not include repairs needed as a result of improper use, failure to maintain, accidents, or loss.

Products must be registered at fishhawkelectronics.com/register within 60-days of purchase to be eligible for warranty and discount coverage.

REQUESTING WARRANTY SERVICE

Request warranty service at fishhawkelectronics.com/service-request-form

SHIPPING

The owner is responsible for shipping products back for warranty service. Fish Hawk Electronics will cover the cost of return shipping within the two-year warranty period.



PERSONAL RECORDS

FISH HAWK BEYOND Warranty & Discount Coverage is activated upon registration of your system at fishhawkelectronics.com/register

Original Owner Name: _____

Model: _____

Probe Serial Number (in battery compartment): _____

Display Serial Number: _____

Purchased From: _____

Purchase Date: _____

Notes:

This image shows a single sheet of white paper with horizontal blue or grey ruling lines. The lines are evenly spaced and run across the width of the page. There are approximately 20 lines visible. The paper has a slight shadow on its right side, suggesting it's resting on a surface.

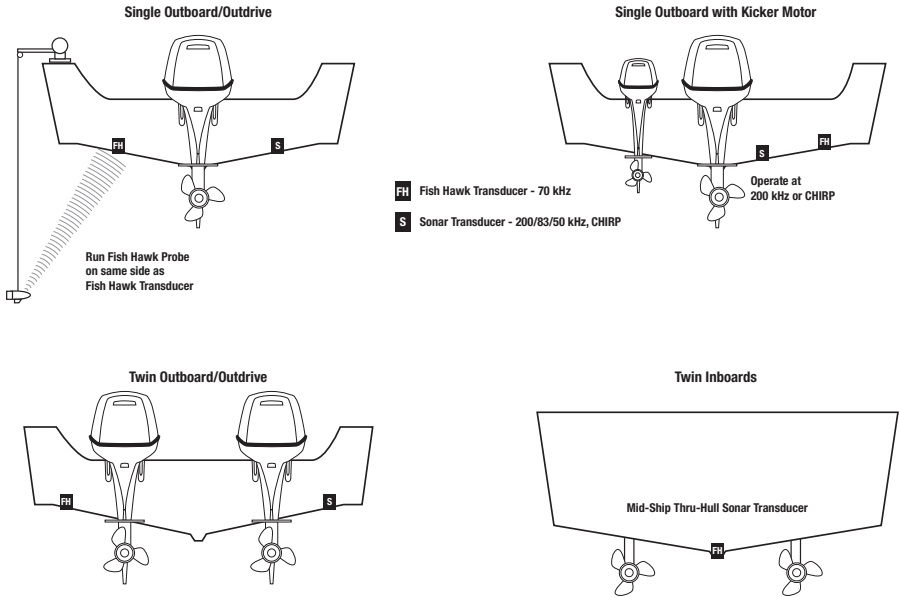
TRANSDUCER INSTALLATION

The transducer listens for the signal sent by the Fish Hawk Probe. Properly installing the transducer is key to getting the best performance.

The transducer should be mounted nearly flush with the bottom of the boat's hull, parallel with the surface of the water.

Select a location on the transom that is not affected by turbulence caused by the motor used for trolling. Do not locate the transducer in front of a motor.

Recommended Transducer Locations



Do not remove the connector or cut the transducer cable. Coil any excess cable out of the way. If more length is needed, 15' transducer extension cables are available for sale at fishhawkelectronics.com.

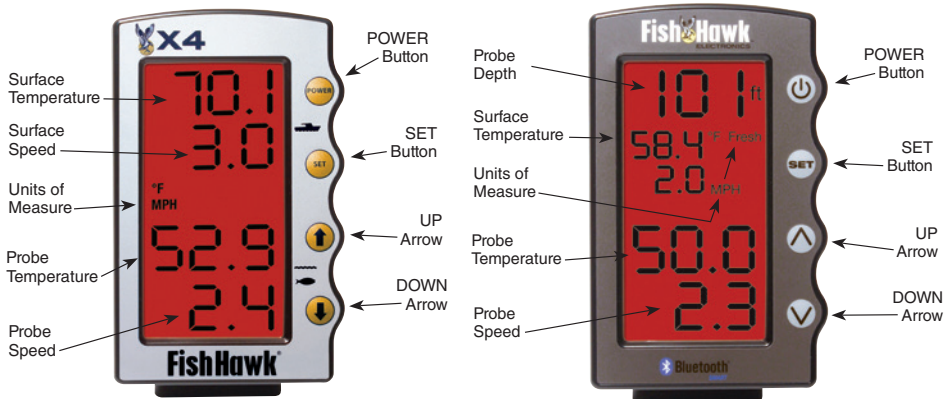
DISPLAY INSTALLATION

Mount the Fish Hawk Display in a visible, protected location. The display requires the power cord and transducer to be connected. The 12-volt power cord has a one amp in-line fuse for wiring directly to the battery.

DISPLAY OPERATION

The Fish Hawk Display is ready to fish right from the box. Press the power symbol button to turn the display on. Screen settings are accessed by pressing the SET button. Each time the SET button is pressed, the display will advance to the next field. Use the UP and DOWN arrow buttons to adjust settings and press the power symbol button once to save changes.

Enable the screen backlight by pressing the UP arrow, turn the backlight off by pressing the DOWN arrow. There are three backlight brightness levels.



If necessary, to restore factory settings, press and hold the SET button while the display is off. Continue holding the SET button down and turn the display on. The display will scroll through all fields and stop on a reset screen. After the decimal points on the reset screen flash 10 times, all numbers will become zeros, indicating factory settings have been restored. Release the SET button and press the power symbol button one time to resume function.

THE FISH HAWK PROBE

Unscrew the battery cap and carefully remove the battery holder from the probe housing [note how the battery holder is fitted inside the housing.] Install four high-quality AA batteries, paying attention to the polarity of each battery. Insert the battery holder and thread the cap on finger-tight only. LO BAT will appear on the display when the probe's batteries need to be replaced.

The probe is water-activated. Dry or remove the protective silicone bumper on the front of the probe after each use to maximize battery life.

PROBE MAINTENANCE

Follow these recommendations to ensure proper Fish Hawk Probe function for many years:

- Loosen the cap at the end of each fishing day to dry natural condensation from inside the battery compartment to prevent corrosion.
- Press axle clips tight against paddle wheel arbor daily.
- Do not disconnect the battery holder from the probe.
- Apply a light coat of lubricant to the O-rings annually. Do not over-lubricate.
- Remove the batteries from the battery holder and store the probe with the cap off during periods of extended storage.



BLUETOOTH® FUNCTIONS

(MODEL X4D BT ONLY)

The Fish Hawk X4D BT is equipped with Bluetooth® to communicate with current mobile devices and Cannon® Optimum Downriggers.

The free Fish Hawk Mobile App is available at the App Store or Google Play. The Fish Hawk App mirrors the Fish Hawk Display on a mobile device and features a catch log to record the details of fish caught.



TROUBLESHOOTING

Troubleshooting information can be found at
fishhawkelectronics.com/troubleshooting

Chat support and messaging are available at
fishhawkelectronics.com

REQUEST SERVICE

Request service by completing the form found at
fishhawkelectronics.com/service-request-form

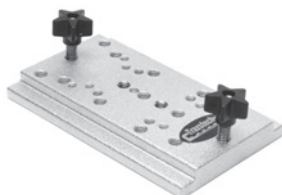
Preferred Water Temperature Ranges (shown in Fahrenheit)			
Species	Lower Limit	Optimum	Upper Limit
Brown Trout	44	60	75
Chinook Salmon	42	50	60
Coho Salmon	44	54	60
Crappie	60	70	75
Kokanee		55	
Lake Trout	42	50	
Largemouth Bass	50	65	75
Atlantic Salmon		54	
Rainbow Trout	44	55	75
Smallmouth Bass	50	65	73
Steelhead	38	55	62
Walleye	50	67	75
Alewife	48	54	72
Cisco		53	
Emerald Shiner		61	
Gizzard Shad		69	
Rainbow Smelt	43	50	57
Spottail Shiner		54	

FISH HAWK ACCESSORIES & PARTS

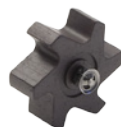
Fish Hawk Accessories and Replacement Parts are available at:
fishhawkelectronics.com



Probe Hard Case



**Track Adapter
for Display**



**Probe Paddle
Wheel**

FISH HAWK APPAREL

Check out hats, decals, and apparel exclusively at:
fishhawkelectronics.com/apparel





Made in the U.S.A.

Fish Hawk Electronics
Grayden Outdoor LLC
7845 Briars Way
Brainerd, MN 56401

fishhawkelectronics.com